

HSS-1000 KIT PLANS



11 10 9 8 7 6 5 4 3 2 1

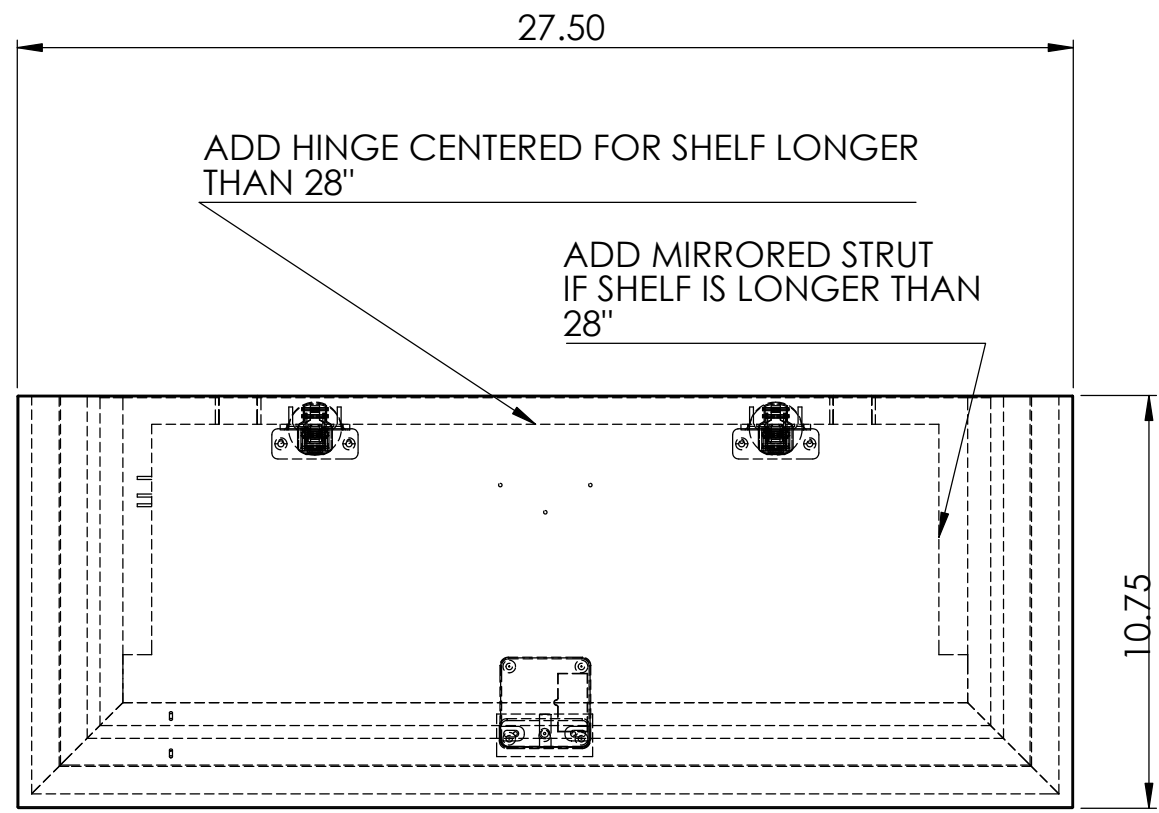
G
F
E
D
C
B
A

ITEM NO.	DESCRIPTION	QTY.
1	SHELF CLEAT	1
2	SHELF OP	1
3	SHELF BOTTOM ASSEMBLY	1
6	HINGE	2
8	LATCH	1
9	LOCK	1
10	MOLDING (CTL/MITERED)	1
4	MOLDING (CTL/MITERED)	1
12	MOLDING (CTL/MITERED)	1
13	LATCH BLOCK	1
15	HINGE PLATE	2
17	LED LIGHT	1

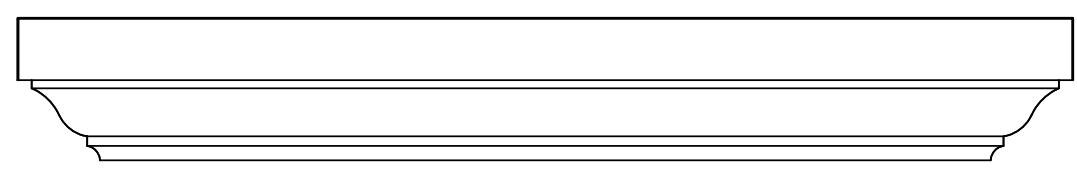
DRAWINGS ARE FOR STANDARD 28" INVISISHELF

- FOR ANY CUSTOM SHELF WIDTH AND DEPTH, ADJUST PART SIZES BY APPLYING THE DIFFERENCE

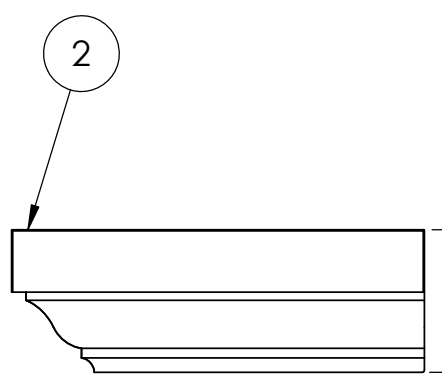
- IF UNSURE, BUILD A TEST SHELF TO CONFIRM DIMENSIONS PRIOR TO BUILDING FINAL FINISHED SHELF



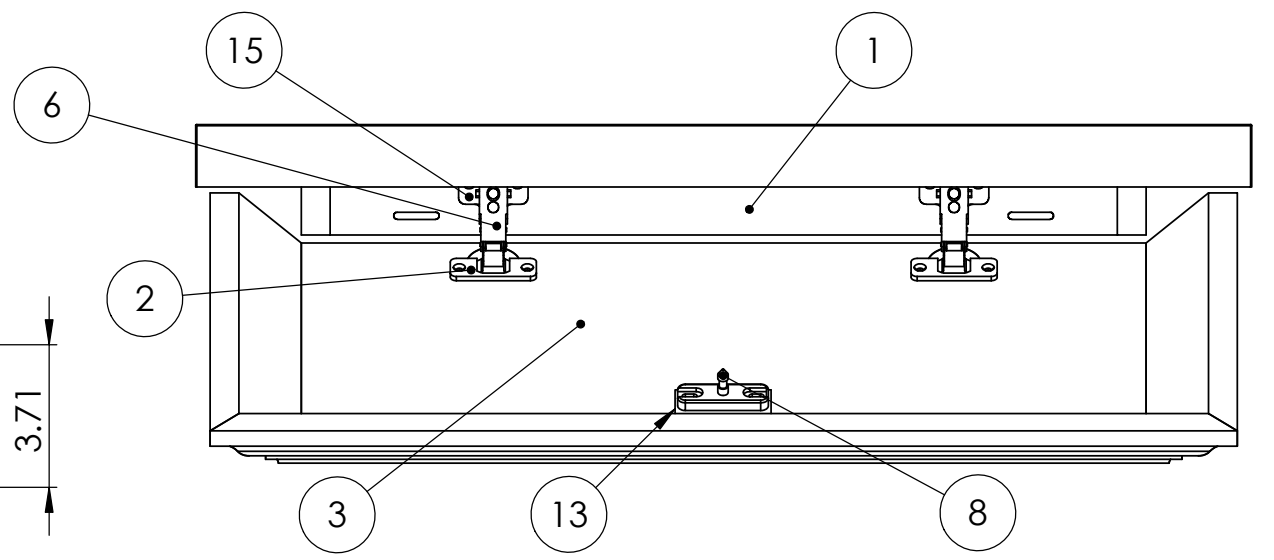
TOP



FRONT



SIDE



Veneer Cannot Have Plugs, Patches, Footballs, or Knots On Visible Faces



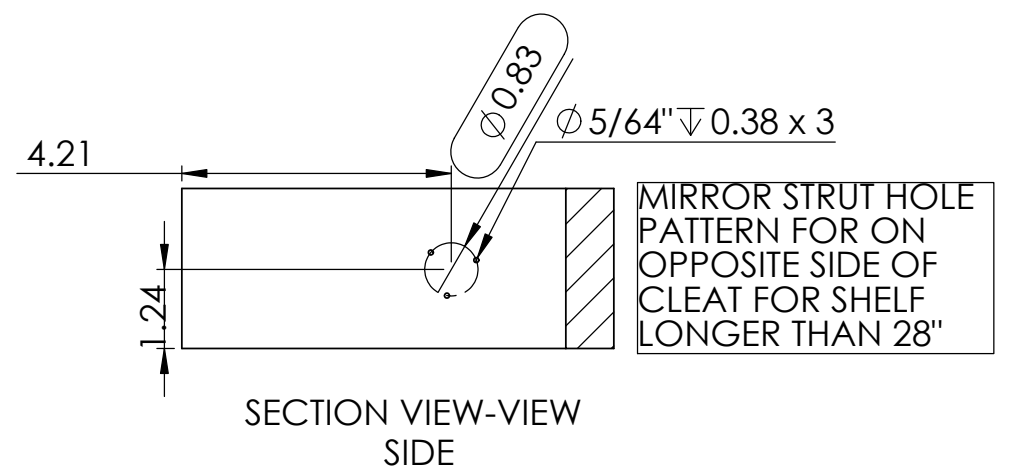
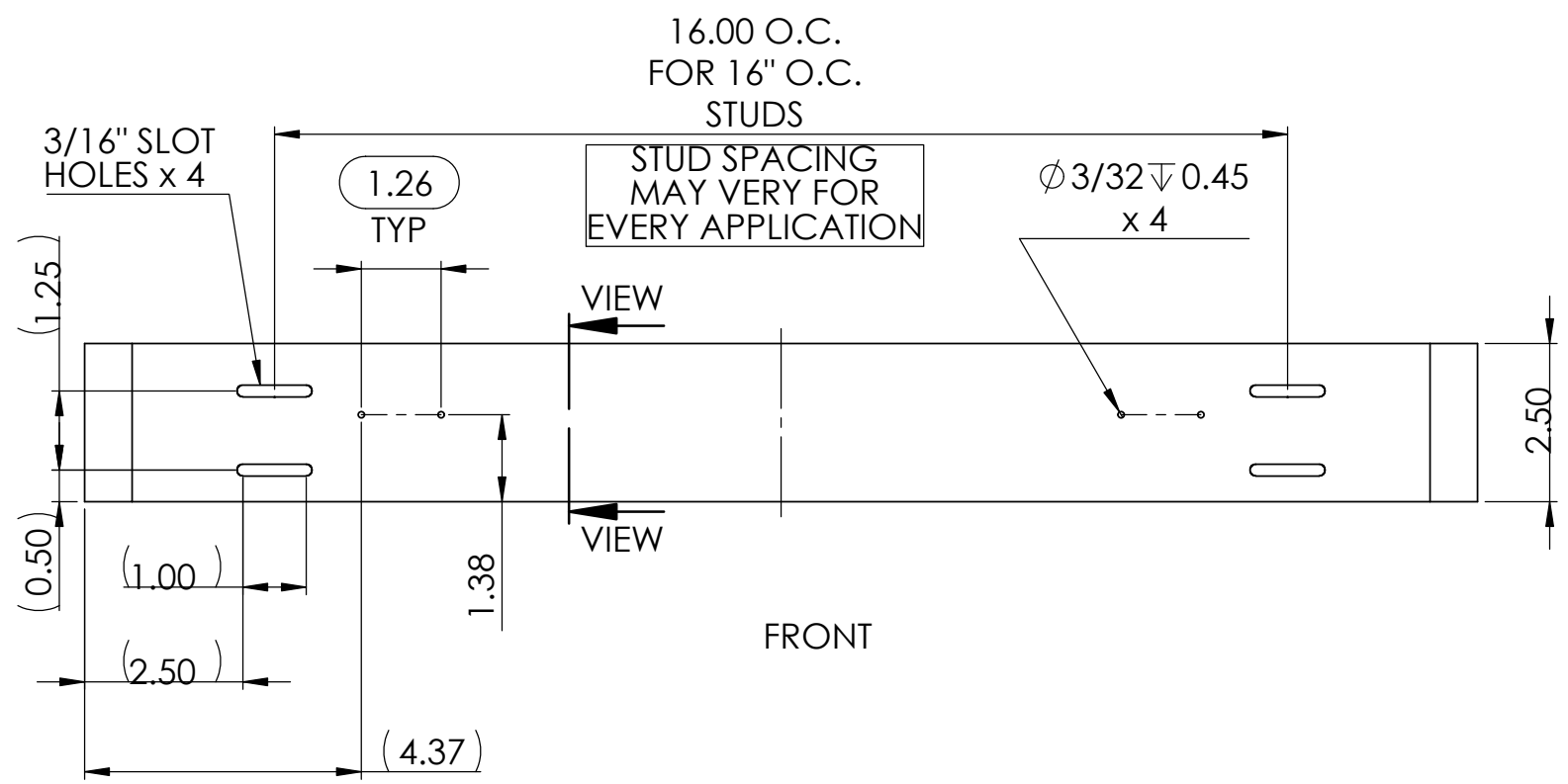
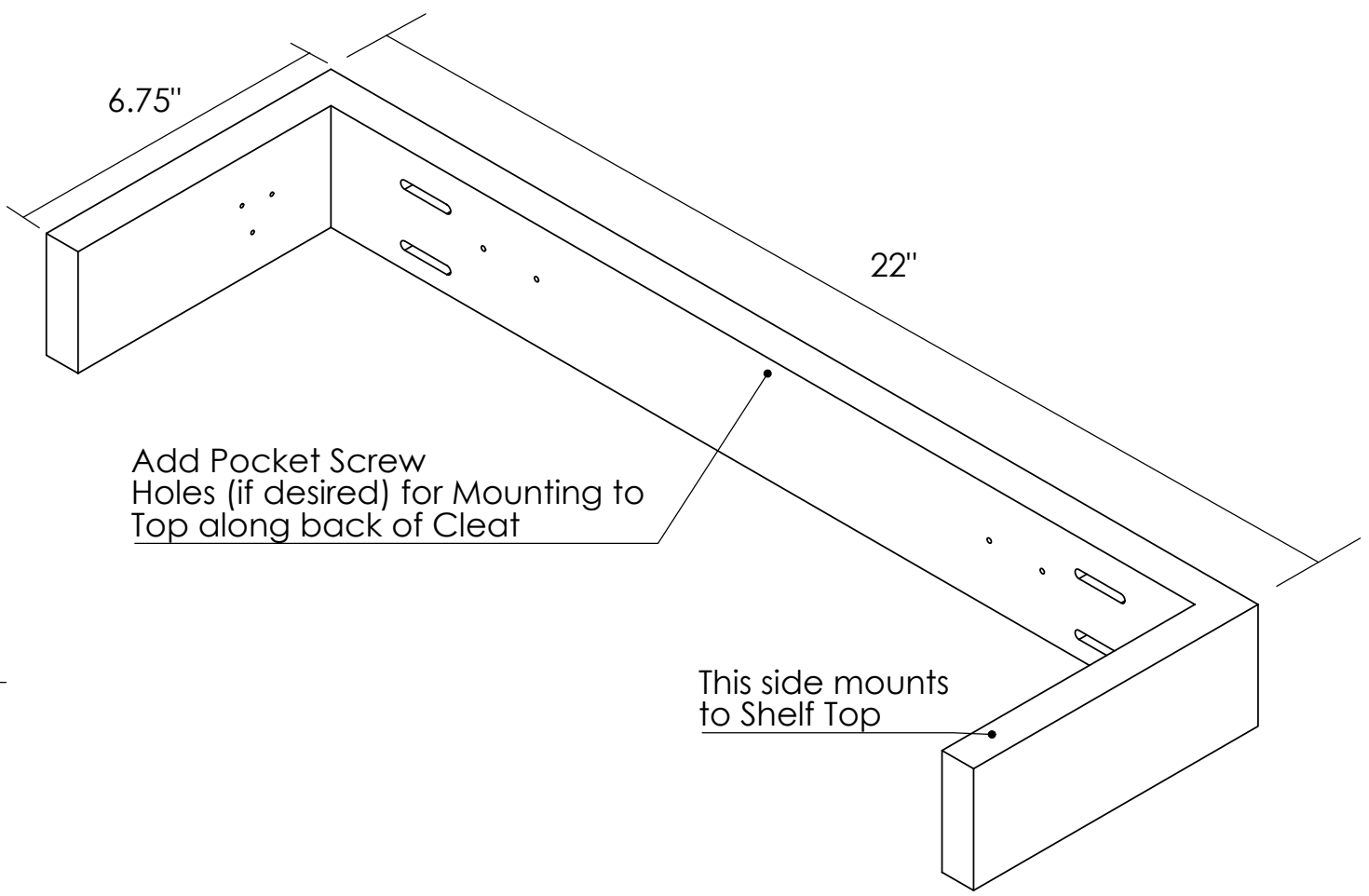
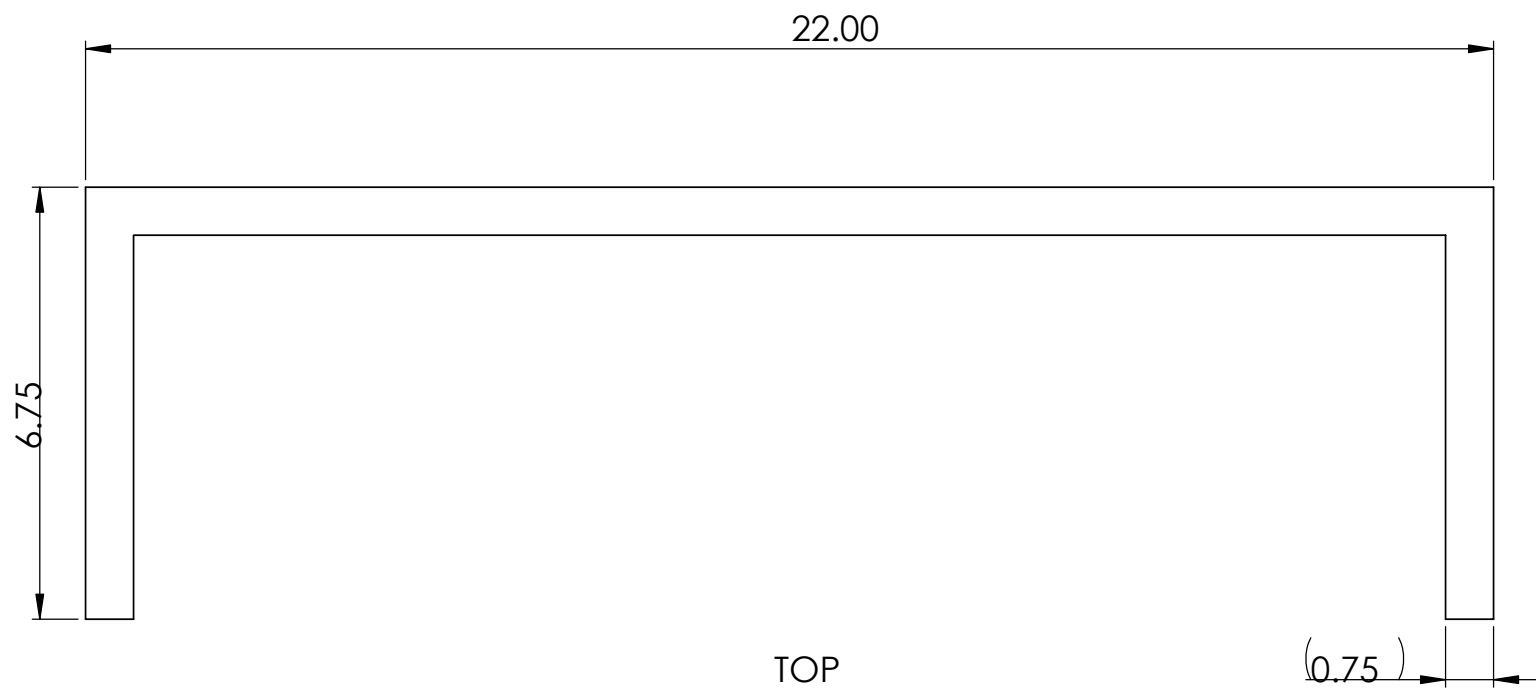
TITLE: INVISISHELF		
SIZE B	DWG. NO.	REV
SCALE: 1:5	WEIGHT:	SHEET 1 OF 7

11 10 9 8 7 6 5 4 3 2 1

11 10 9 8 7 6 5 4 3 2 1

G
F
E
D
C
B
A

G
F
E
D
C
B
A



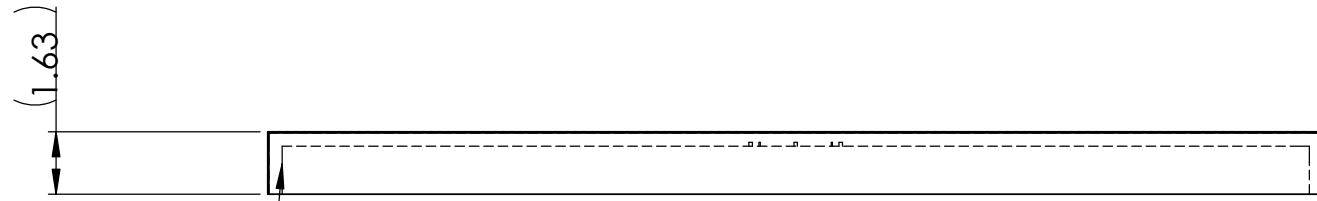
TITLE: SHELF SUPPORT WALL CLEAT		
SIZE B	DWG. NO.	REV
SCALE: 1:2	WEIGHT:	SHEET 2 OF 7

11 10 9 8 7 6 5 4 3 2 1

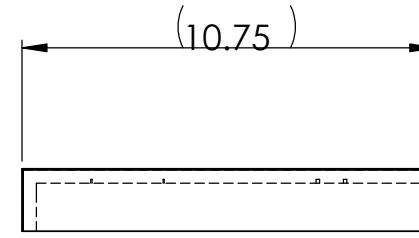
11 10 9 8 7 6 5 4 3 2 1

G
F
E
D
C
B
A

G
F
E
D
C
B
A

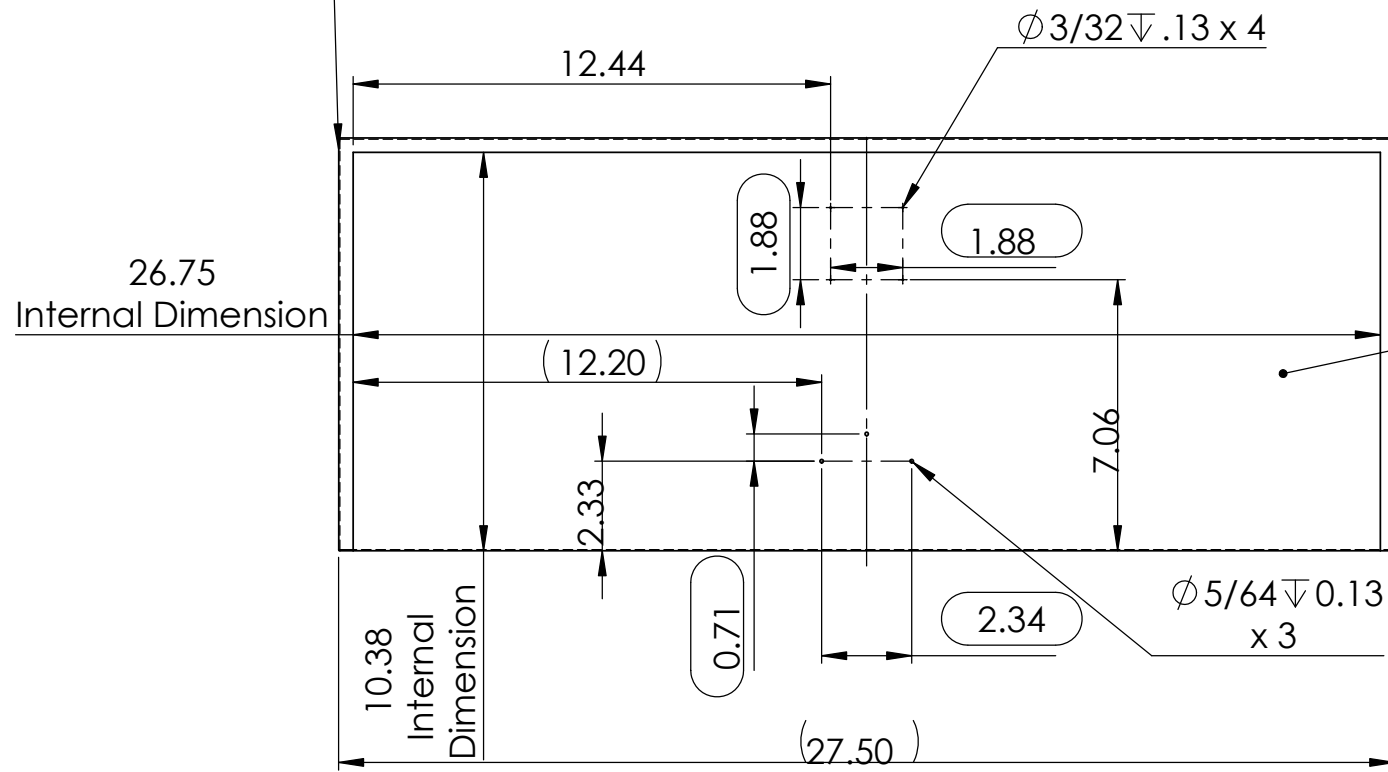


FRONT

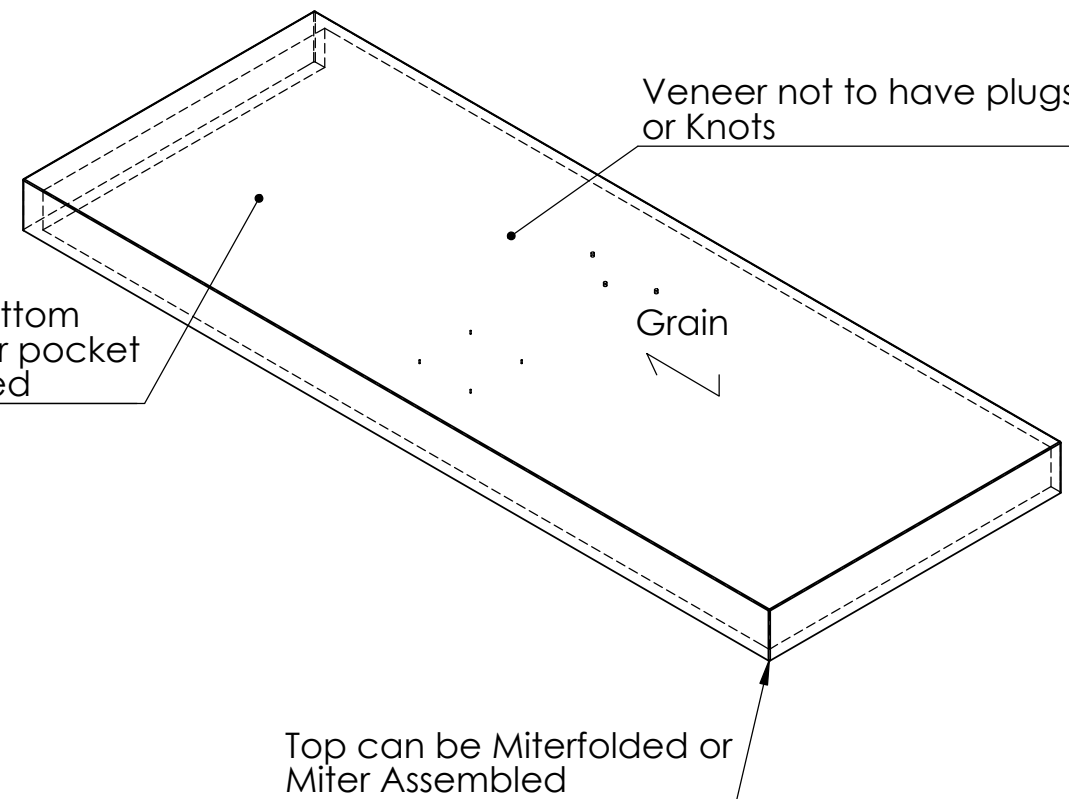


SIDE

3/8" Miter construction



BOTTOM



Veneer not to have plugs, patches or Knots

Grain

Glue and Pin HSS-100 to bottom of Shelf Top or pocket screw if desired

Top can be Miterfolded or Miter Assembled

Flat Stock Size before Miterfolding: 30.75" x 12.38"
In 3/8" Material
Flat Stock Size before Miterfolding: 31" x 12.5"
In 1/2" Material



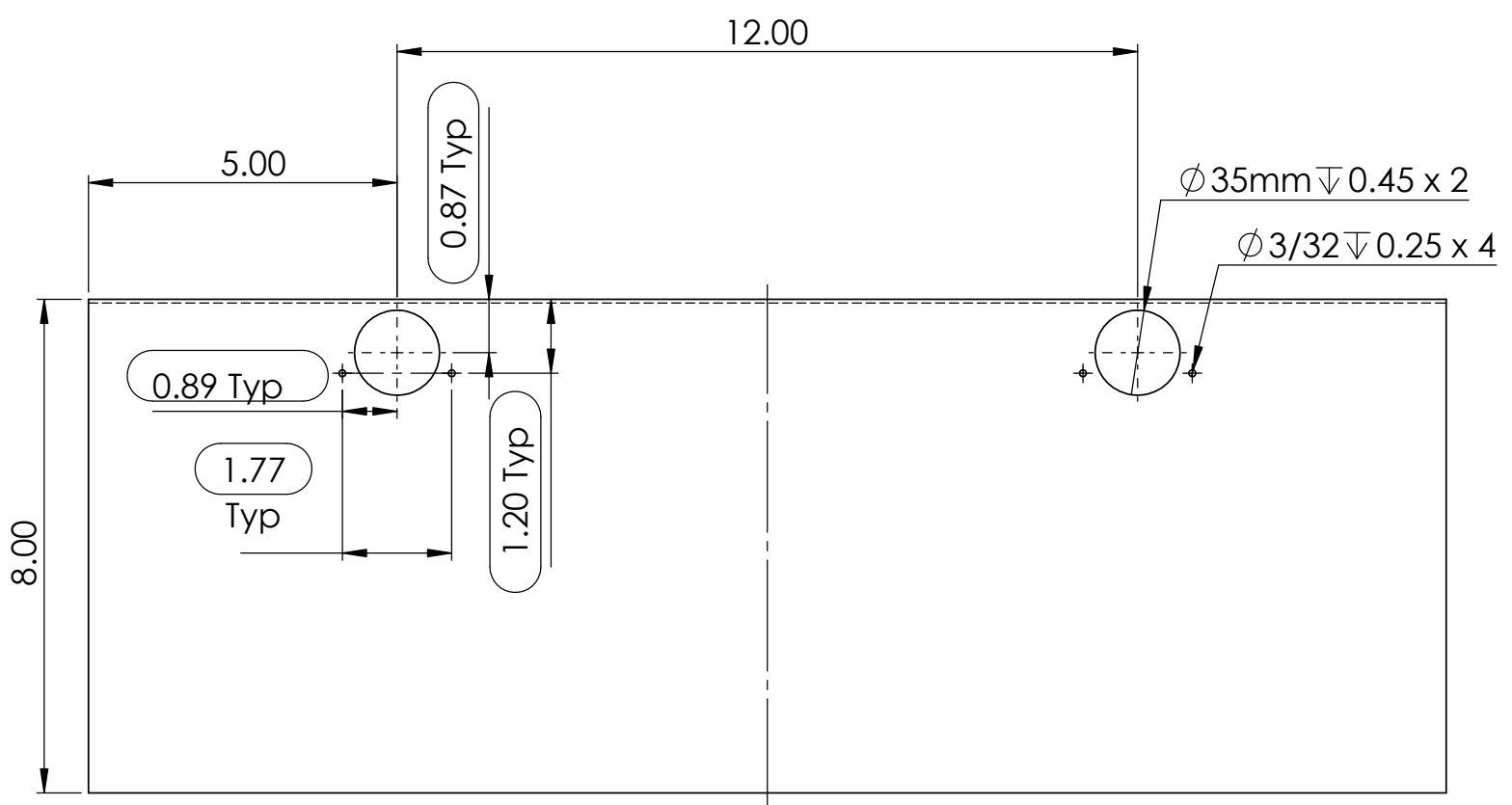
TITLE: SHELF TOP		
SIZE B	DWG. NO.	REV
SCALE: 1:5	WEIGHT:	SHEET 3 OF 7

11 10 9 8 7 6 5 4 3 2 1

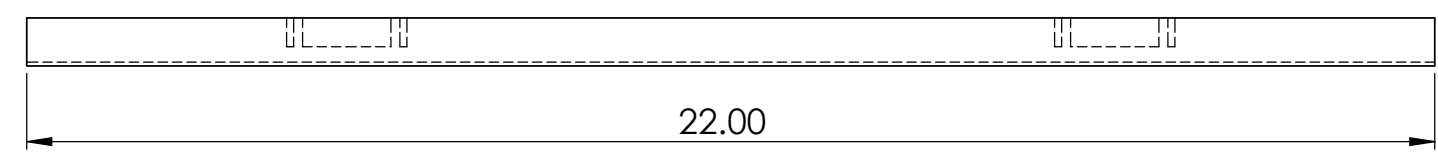
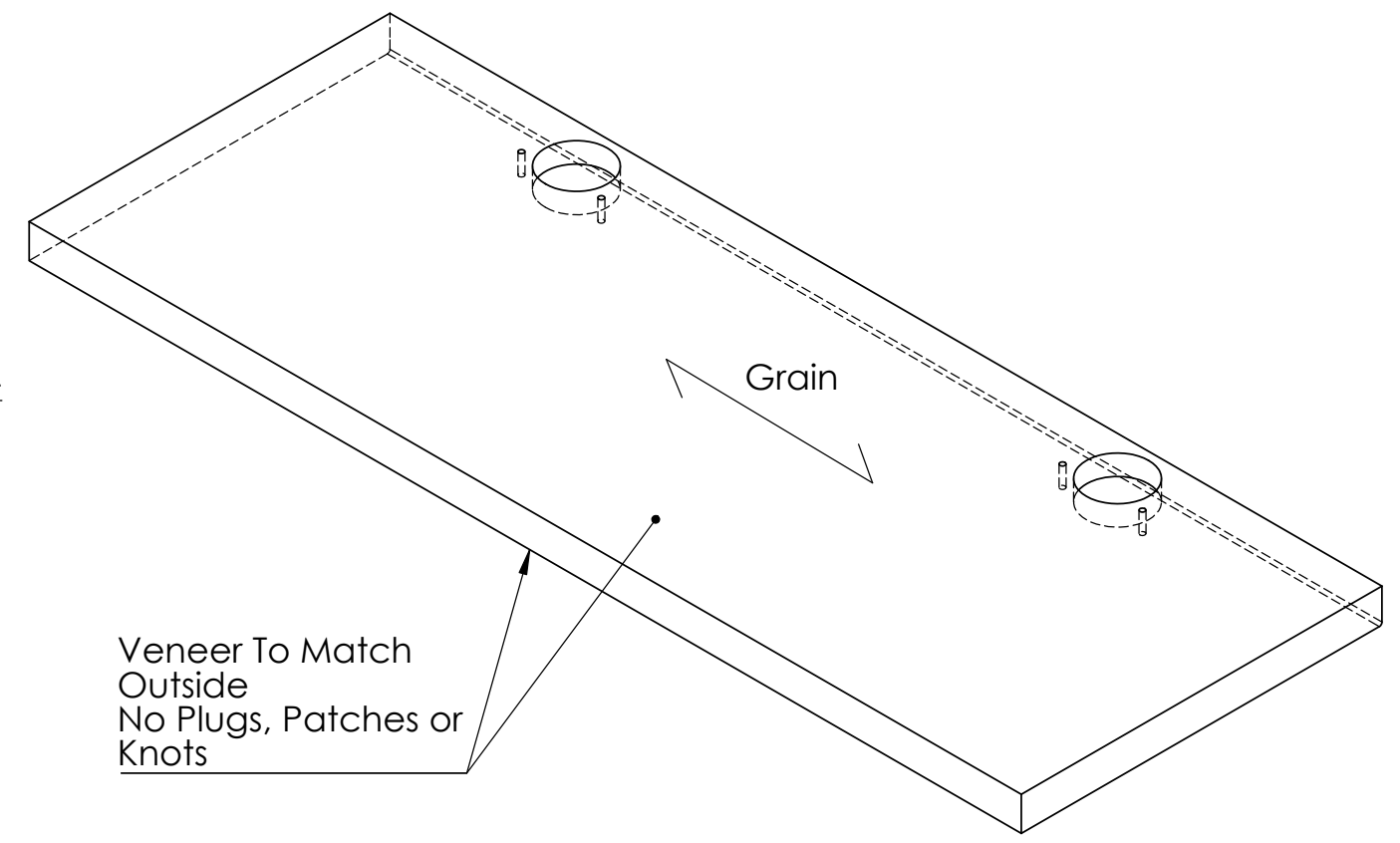
11 10 9 8 7 6 5 4 3 2 1

G
F
E
D
C
B
A

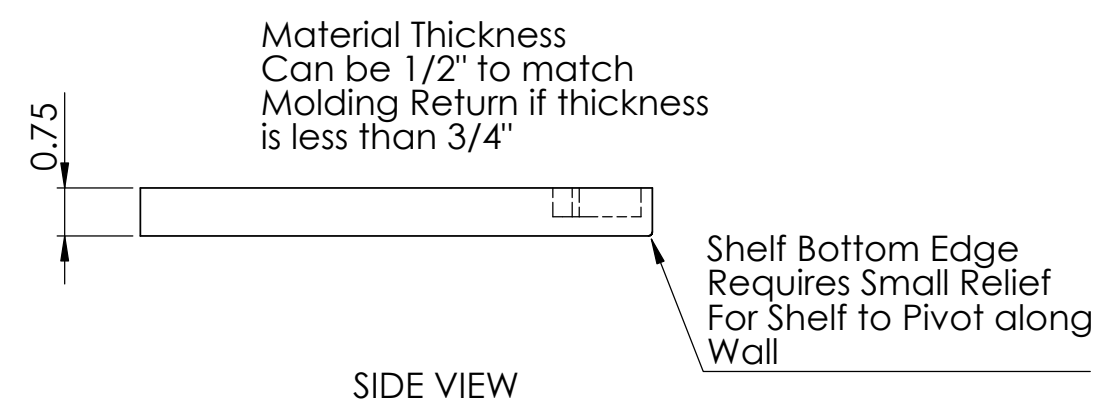
G
F
E
D
C
B
A



TOP



FRONT



SIDE VIEW



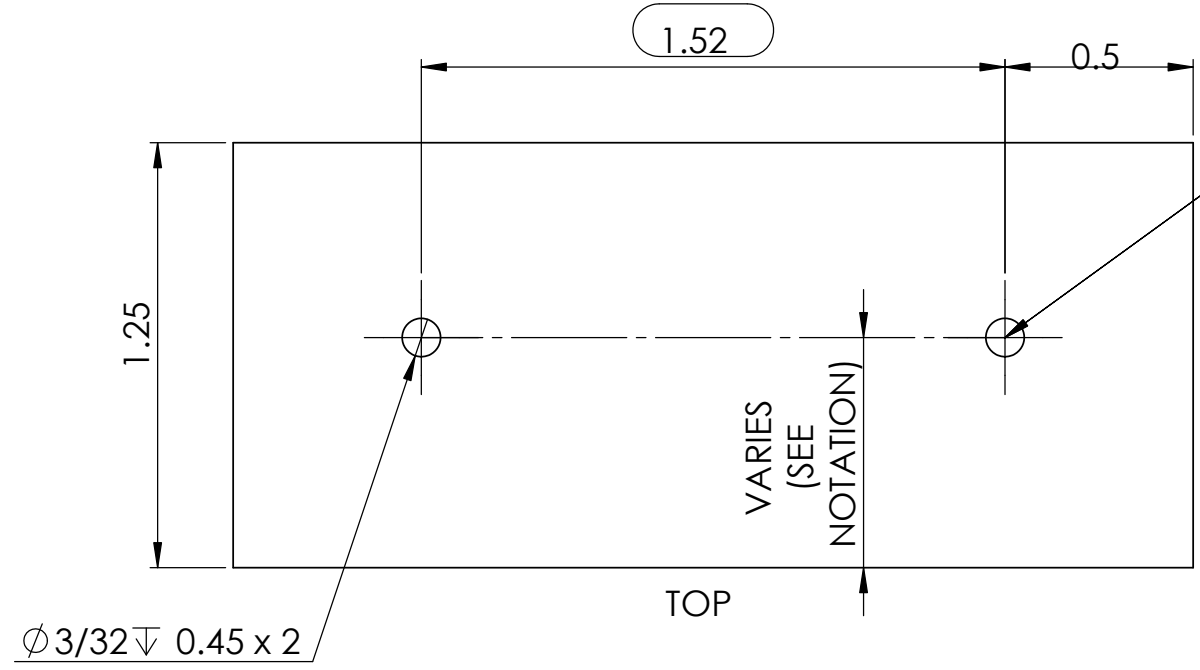
TITLE:		
SHELF BOTTOM		
SIZE	DWG. NO.	REV
B		
SCALE: 1:5	WEIGHT:	SHEET 4 OF 7

11 10 9 8 7 6 5 4 3 2 1

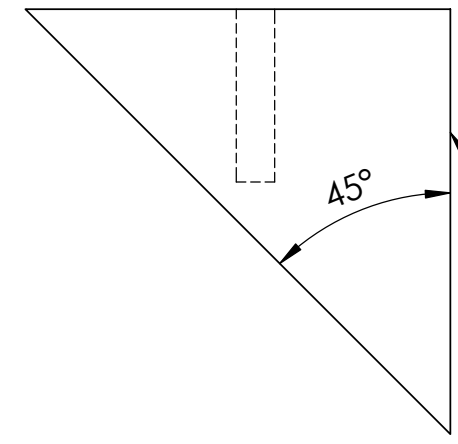
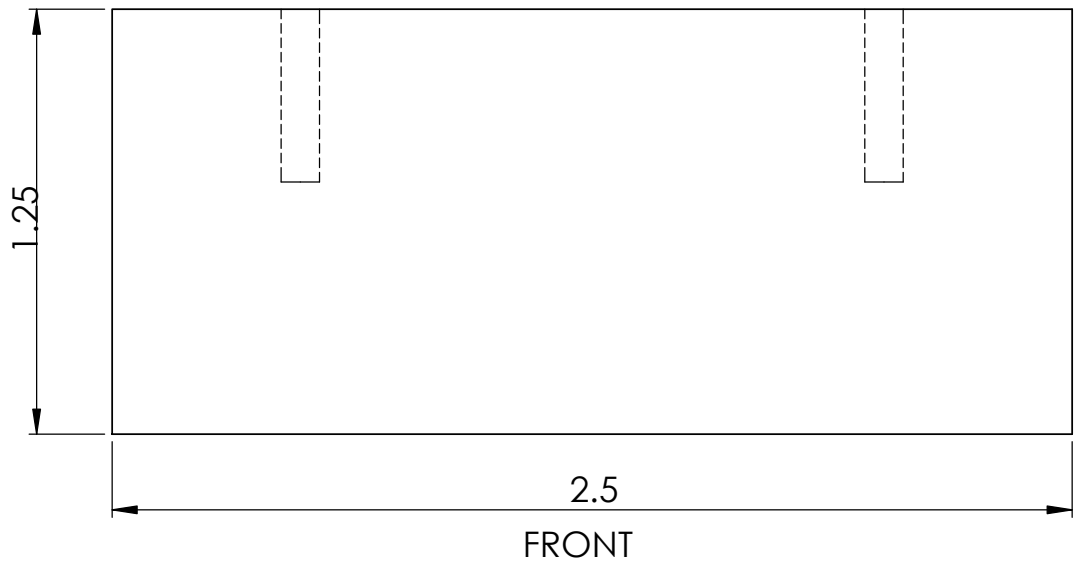
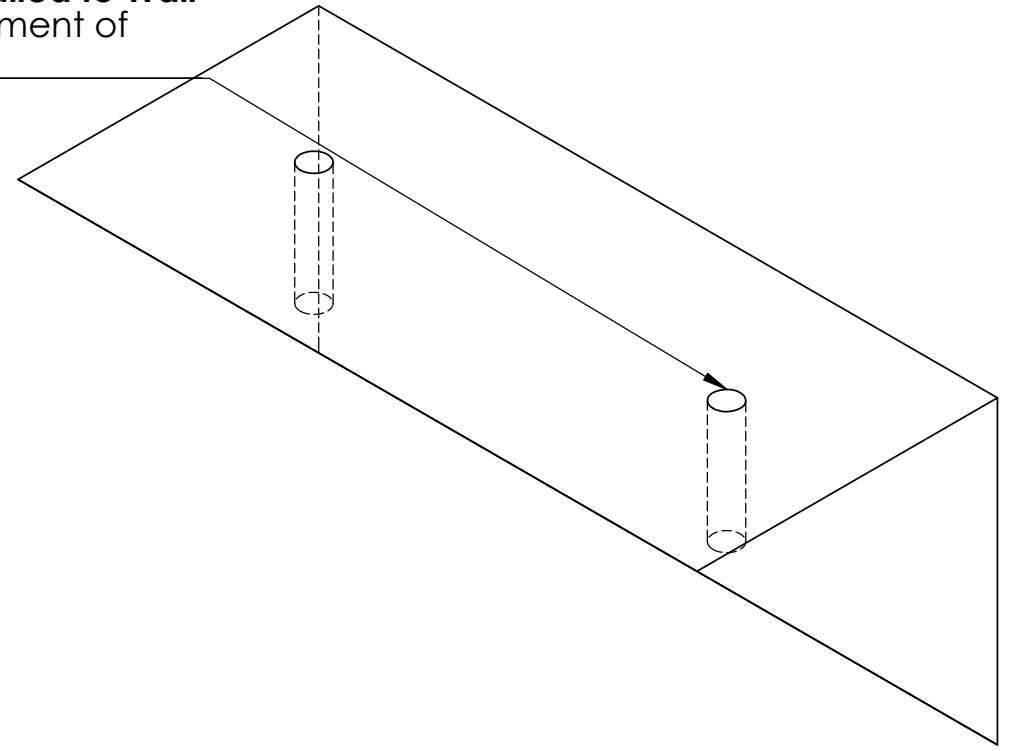
11 10 9 8 7 6 5 4 3 2 1

G
F
E
D
C
B
A

G
F
E
D
C
B
A



Drill for Latch Holes
after Shelf is installed to Wall
 ensure proper fitment of
 Lock to Latch



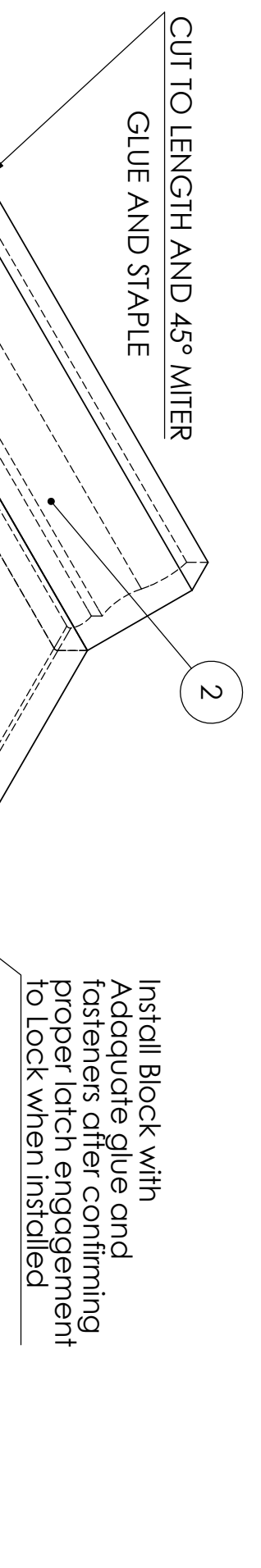
Use (2) wood screws with glue
 to fasten block
 to back of Crown Molding
 securely after confirming correct
 position for proper lock and latch
 engagement (*make sure screw
 lengths don't penetrate front of
 crown molding*)



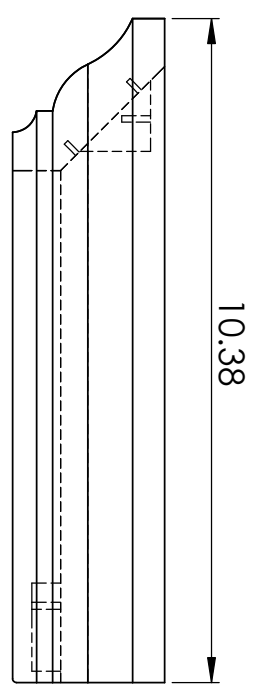
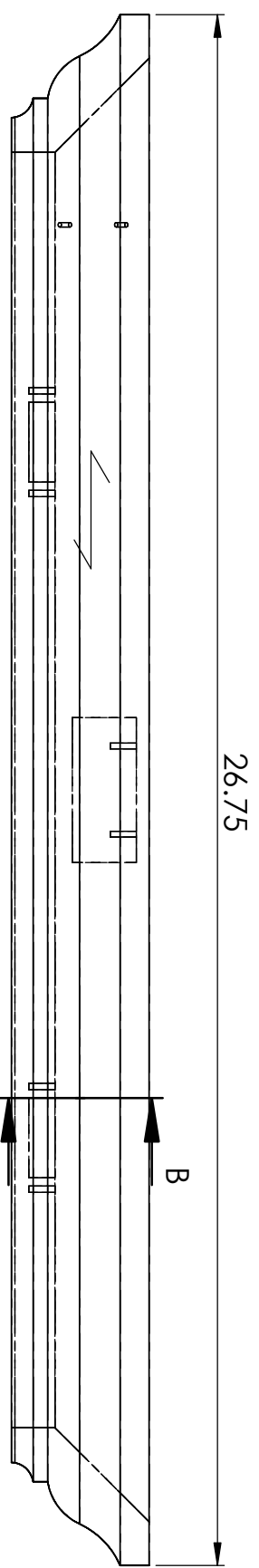
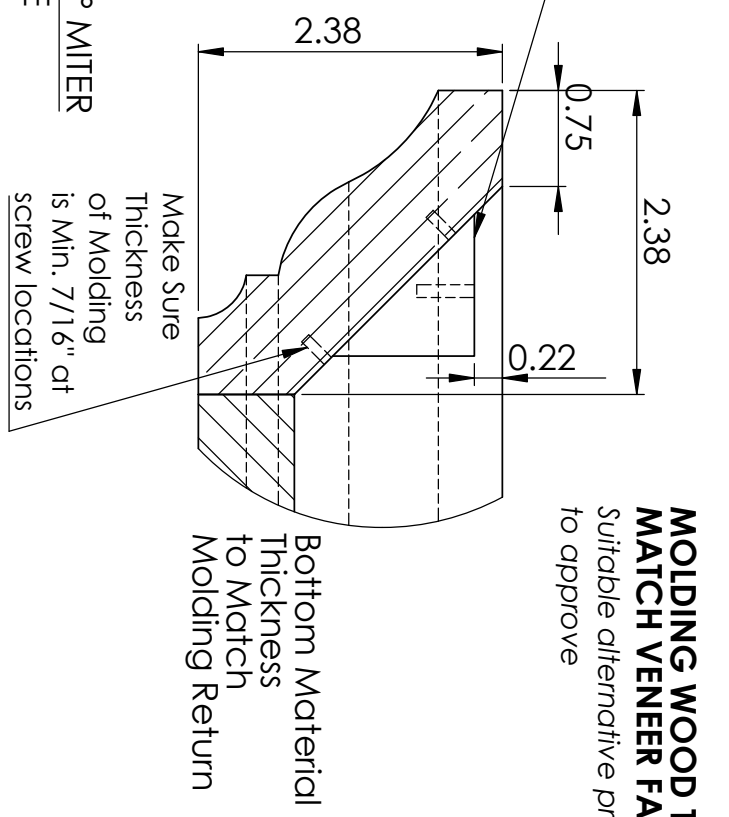
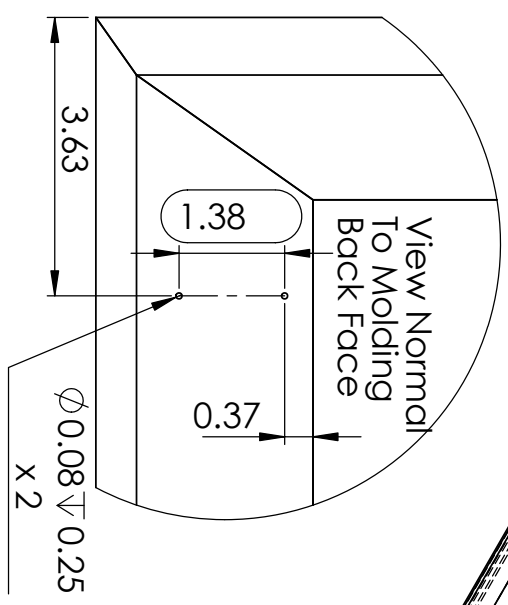
TITLE:		
LATCH BLOCK		
SIZE	DWG. NO.	REV
B		
SCALE: 2:1	WEIGHT:	SHEET 5 OF 7

11 10 9 8 7 6 5 4 3 2 1

11 10 9 8 7 6 5 4 3 2 1



ITEM NO.	DESCRIPTION	QTY.
1	SHELF BOTTOM ASSEMBLY	1
2	MOLDING (CTL/MITERED)	1
3	MOLDING (CTL/MITERED)	1
4	MOLDING (CTL/MITERED)	1
5	LATCH BLOCK	1



TITLE SHELF BOTTOM ASSEMBLY



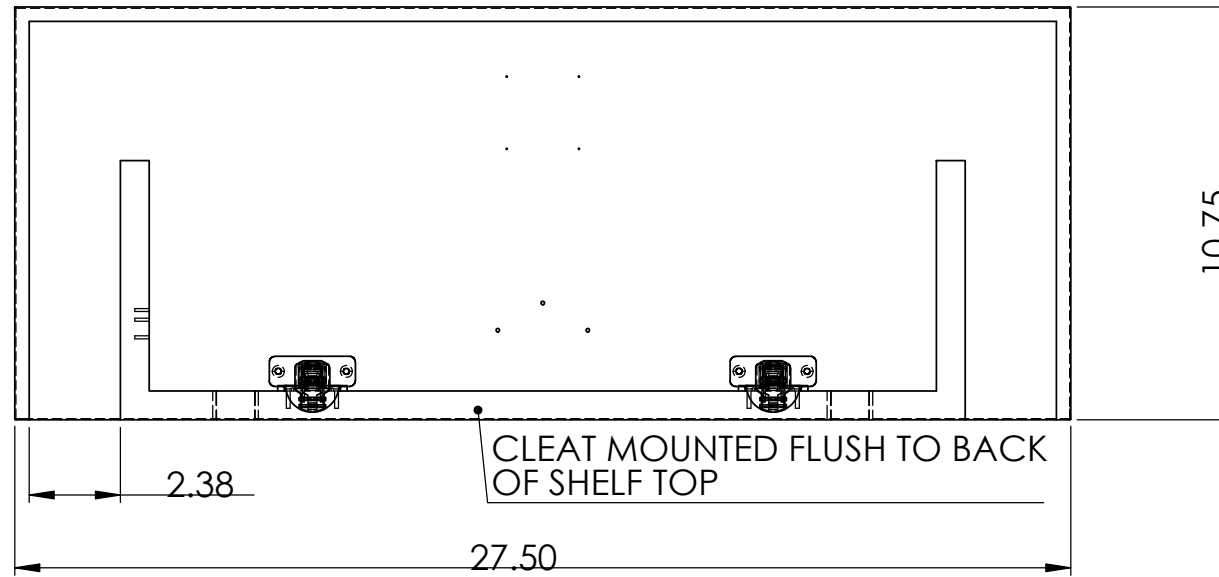
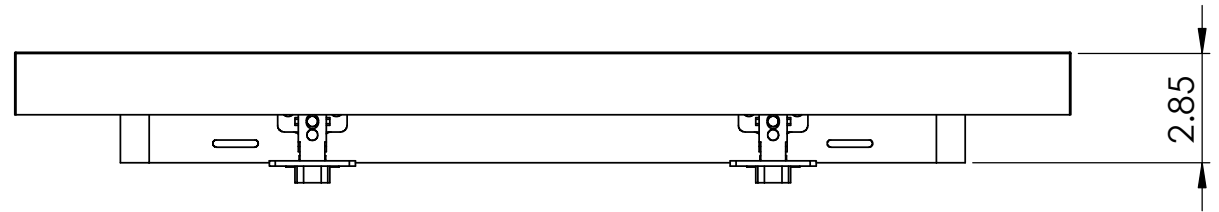
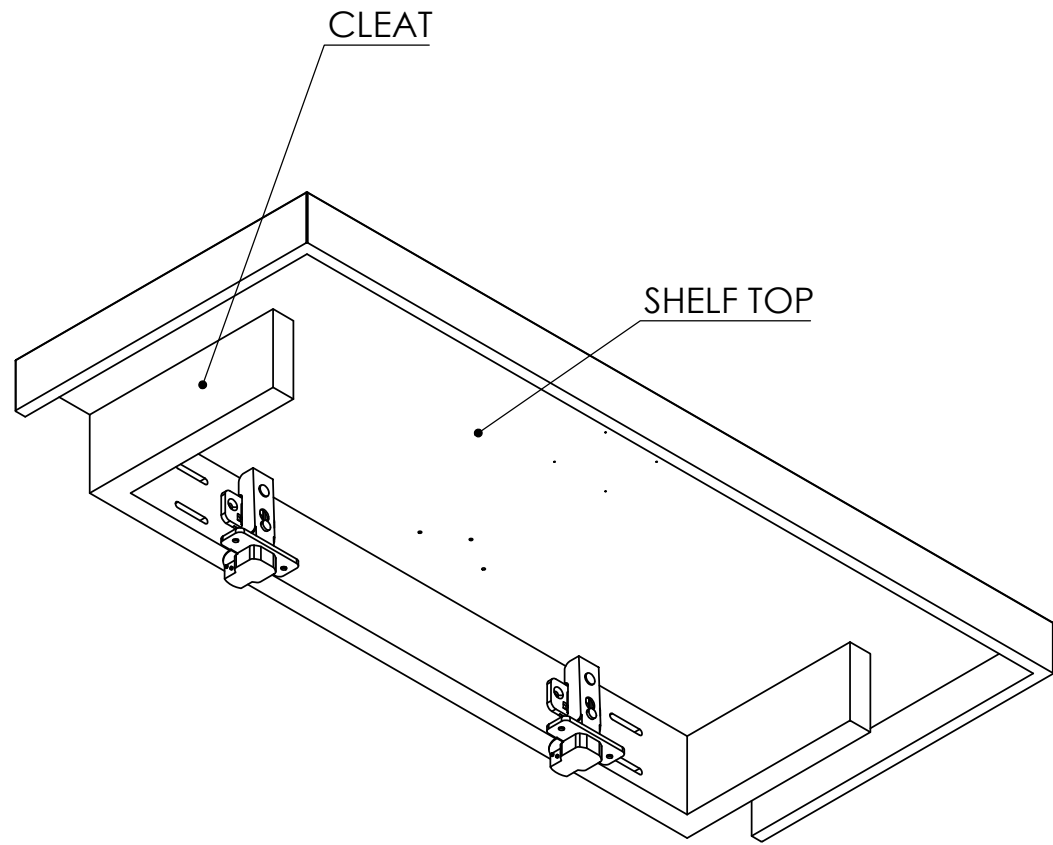
SIZE DWG. NO. **B** REV
 SCALE: 1:3 WEIGHT: SHEET 6 OF 7

A B C D E F G A B C D E F G

11 10 9 8 7 6 5 4 3 2 1

G
F
E
D
C
B
A

G
F
E
D
C
B
A



TITLE:		
SHELF TOP ASSEMBLY		
SIZE	DWG. NO.	REV
B		
SCALE: 1:5	WEIGHT:	SHEET 7 OF 7

11 10 9 8 7 6 5 4 3 2 1