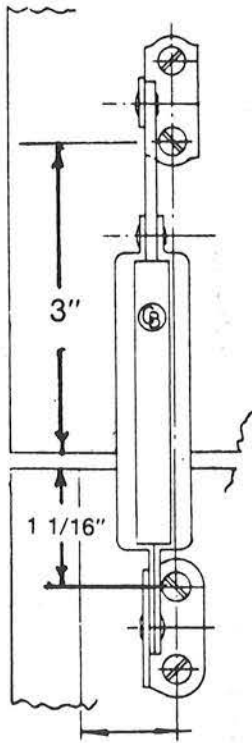


TOY BOX HINGE



SERIES 700



Assembly

1. Place bottom bracket so that top screw hole is $1 \frac{1}{16}$ " down from the top of back panel. Fasten with #6 sheet metal screw. Secure second screw as well.
2. Open lid to approximately 90 degrees and place lid support against the underside of lid with cover bracket flat against this surface. Secure with two screws as before. The distance from the back edge of the lid to the first screw hole should be 3 inches.

Back Panel

To find Inch Pounds, multiply half the distance from front to back times the weight of the lid.

SPRING COLOR	Inch Pounds	
	Low Limit	High Limit
ORANGE	95	125
YELLOW	65	95
BLACK	55	65
MAROON	45	55
GREEN	40	45
BLUE	35	40

Do not try to operate by hand.